



# POWER YOUR FUTURE

PROFESSIONAL DIESEL  
GENERATOR SETS



FKS POWER





## GENERAL MANAGER' S STATEMENT

We, Yangzhou Fukangsi Electrical Machine Co., Ltd., have been manufacturing and producing diesel generator set and contribution to this industry for around 20 years since it was established. Our company staff always consider "diligence, innovation, cooperation" as our company' s culture and philosophy. Due to consistantly forging ahead, high enterprising spirit, our company now has developed into modern high technology company with all our common efforts.

Our head quarter is located at Yangzhou City, Jiangsu Province, with one of the biggest modern gen-set factory with total 40,000 square meters, with over 150 staff working in this company. Over the years, our product has not only sold out to domestic market, but also all around the world, just to meet different customer' s demand with a high praise for our product. Therefore, we are really appreciated our customers which always choose our "FKS Power" brand generator sets.

But this is all belonging to the past, we still have to work more harder and put more efforts to make our product more customized with more customer satisfaction. We will continue to focus on investing our business, strengthen our core advantage, sustain to make our technology innovation in order to create more high quality products.

When we look to the past, we are very proud of ourselves which we did, meanwhile when we look to the future, we also have a very aggressive ambition with high working spirit. All of our staff will always do our best in new era in order to make personal and company common development.

Frank Teng  
General manager  
Yangzhou Fukangsi Electrical Machine Co., Ltd



# FKS POWER GENERATION



City Power



Hospital power



Market power



Hydropower Station



High-speed rail



Industrial electricity



Airport



Expressway



We, Yangzhou Fukangsi Electrical Machine Co., Ltd, as one of top professional and reputable manufacturers of diesel generator set, which is located at Yi Ling development area, Yangzhou City, Jiangsu province, China. Our company always keeps ready stock gen-set according to our dealers and distributor's request based on each month so we could support our valuable customer very well if there's any urgent delivery request from customers at most cases, and our company is also generator set repairing base in domestic market, product research and development base, technical training center, customer service supporting center, with annual production assembling capacity of 8000 units, strict implementation of ISO9001 quality certification system as well as ISO14000 and ISO18000 certificate system, each gen-set we have to undergo rigorous test to ensure the equipment has high performance and high quality without any defect before shipment. And we also have a very strong after-sales team to provide our customer with good and efficient service if they're any problems occur.

Our company mainly chooses famous and branded engine like Cummins (from DCEC, CCEC and also imported Cummins as well), Volvo, Doosan, Mitsubishi, MTU, Perkins, Yuchai, and other well-known brand engine as driving power, and coupled with world-class technology alternator like Stamford, Leroy Somer, Mecc alte, Marathon, and control system we use DEEP SEA original from UK, to ensure our product quality is excellent. Leading technology, flexible design, the production of independent intellectual property rights of the "FKS" brand generating units. Our products include air-cooled, water-cooled gasoline, diesel and natural gas units, 50HZ or 60HZ, output power of 2 - 2000KW (voltage 220V ~ 13.8KV). We also focus on the mobile type generator and control system, mute generator set R & D and production and provide a low noise package system of generator variety: soundproof, improved container, metal plate or aluminum material suitable for sound sensitive environment (strong, lightweight, corrosion). Motor trailer type and mobile vehicle system fukangsi aroused more and more attention from customers, they can bear heavy load and adapt to the complex environment and is convenient to move with superior performance.







**FKS POWER**

Our company has made great achievements in many fields such as noise reduction, energy saving, environmental protection, durability and control system, and has been in the leading position in the domestic industry. At present, our products have been widely used in communications, electricity, petroleum and petrochemical, civil aviation, highways, ports, ships, national defense, nuclear industry, energy, radio and television, metallurgy, construction, postal and other systems, Our company will constantly focus on the characteristics of business ideas, the new service, to meet the procurement needs of all sectors of society, FKS POWER will rely on a strong rapid and steady development of power generation equipment, high quality to provide customers around the world.



# DCEC

## DIESEL GENERATOR SET



Genset Model	Genset Power		Engine Model	Controller	Fuel Consumption (L/H) 100%	Open Genset Dimension & Weight		Soundproof Genset Dimension & Weight	
	Standby (kVA) PF:0.8	Prime (kVA) PF:0.8				Dimension (L × W × H) mm	Weight (kg)	Dimension (L × W × H) mm	Weight (kg)
FKS-C28	28	25	4B3.9-G1	DSE6020	6.8	1760 × 760 × 1400	730	2300 × 1000 × 1600	1250
FKS-C30	30	27	4B3.9-G2	DSE6020	6.8	1760 × 760 × 1400	730	2300 × 1000 × 1600	1250
FKS-C41	41	38	4BT3.9-G1	DSE6020	9.3	1760 × 760 × 1400	730	2400 × 1000 × 1650	1350
FKS-C43	43	39	4BT3.9-G2	DSE6020	9.3	1760 × 760 × 1400	730	2400 × 1000 × 1650	1350
FKS-C66	66	60	4BTA3.9-G2	DSE6020	13.5	1860 × 760 × 1400	980	2700 × 1100 × 1750	1450
FKS-C102	102	83	6BT5.9-G1	DSE6020	20.3	2300 × 830 × 1700	1310	3000 × 1200 × 1750	1800
FKS-C110	110	100	6BT5.9-G2	DSE6020	22.3	2300 × 830 × 1700	1330	3000 × 1200 × 1750	1800
FKS-C125	125	115	6BTA5.9-G2	DSE6020	25.2	2300 × 830 × 1700	1340	3300 × 1200 × 1900	2100
FKS-C145	145	132	6BTA5.9-G2	DSE6020	27.8	2350 × 830 × 1700	1360	3300 × 1300 × 2000	2150
FKS-C170	170	156	6BTA5.9-G12	DSE6020	32.3	2420 × 880 × 1550	1240	3300 × 1300 × 2000	2200
FKS-C175	175	160	6CTA8.3-G1	DSE6020	35.1	2430 × 945 × 1850	1720	3600 × 1300 × 2000	2500
FKS-C200	200	180	6CTA8.3-G2	DSE6020	39.1	2430 × 945 × 1850	1800	3600 × 1300 × 2100	2500
FKS-C220	220	200	6CTA8.3-G2	DSE6020	41.4	2460 × 960 × 1850	1950	3600 × 1300 × 2100	2700
FKS-C275	275	250	6LTA8.9-G2	DSE7320	50.0	2530 × 960 × 1850	2060	3800 × 1500 × 2100	3000

# CCEC

## DIESEL GENERATOR SET



Genset Model	Genset Power		Engine Model	Controller	Fuel Consumption (L/H) 100%	Open Genset Dimension & Weight		Soundproof Genset Dimension & Weight	
	Standby (kVA) PF:0.8	Prime (kVA) PF:0.8				Dimension (L×W×H) mm	Weight (kg)	Dimension (L×W×H) mm	Weight (kg)
FKS-C275	275	250	MTA11-G2	DSE7320	53.4	3000×950×1750	2550	4000×1400×2100	3400
FKS-C275	275	250	NT855-GA	DSE7320	53.4	3000×950×1750	2600	4000×1400×2100	3400
FKS-C330	330	300	NTA855-G1A	DSE7320	61.3	3100×1180×1700	2650	4000×1400×2100	3500
FKS-C350	350	316	MTAA11-G3	DSE7320	61.2	3100×1000×1700	2650	4000×1400×2100	3800
FKS-C350	350	316	NTA855-G1B	DSE7320	77.9	3030×1100×1850	2870	4300×1500×2200	4300
FKS-C385	385	350	NTA855-G2A	DSE7320	71.3	3100×1050×1760	2700	4300×1500×2200	4400
FKS-C388	388	350	NTA855-G4	DSE7320	72.0	3100×1050×1780	2700	4300×1500×2200	4400
FKS-C412	412	375	NTAA855-G7	DSE7320	85.4	3300×1200×1760	2800	4300×1500×2200	4600
FKS-C440E	440	/	NTAA855-G7A	DSE7320	89.2	3300×1300×1800	2800	4300×1500×2200	4600
FKS-C500	500	450	KTA19-G3	DSE7320	97.0	3400×1250×1900	3200	4600×1700×2300	5900
FKS-C550	550	500	KTA19-G3A	DSE7320	116.0	3400×1380×1980	4040	4600×1700×2300	5800
FKS-C550	550	500	KTA19-G4	DSE7320	107.0	3400×1250×1950	3300	4800×1800×2500	6500
FKS-C625	625	563	KTAA19-G5	DSE7320	116.0	3500×1300×1980	3600	4800×1800×2500	6500
FKS-C650	650	575	KTAA19-G6	DSE7320	135.0	3700×1250×1960	3600	4800×1800×2500	6600
FKS-C650E	650	/	KTA19-G8	DSE7320	128.5	3650×1550×1950	3600	4800×1800×2500	6500
FKS-C688E	688	/	KTAA19-G6A	DSE7320	164.2	3700×1570×2080	4550	4800×1800×2500	6600
FKS-C715	715	650	QSKTAA19-G4	DSE7320	145.0	3800×1550×1850	3700	4800×1900×2500	7000
FKS-C800	800	728	KT38-GA	DSE7320	190.0	4250×1750×2380	6300	6058×2438×2896	11500
FKS-C825	825	750	KTA38-G2	DSE7320	200.2	4500×2060×2430	6850	6058×2438×2896	11500
FKS-C888	888	800	KTA38-G2B	DSE7320	167.3	4500×1800×2450	7800	6058×2438×2896	12000
FKS-C1000	1000	920	KTA38-G2A	DSE7320	208.9	4350×2060×2430	7150	6058×2438×2896	12500
FKS-C1100	1100	1000	KTA38-G5	DSE7320	208.0	4650×1850×2450	8600	6058×2438×2896	13000
FKS-C1250E	1250	/	KTA38-G9	DSE7320	275.5	4400×2100×2200	7800	6058×2438×2896	13500
FKS-C1375	1375	1250	KTA50-G3	DSE7320	291.6	4950×2060×2350	9600	12192×2438×2896	16000
FKS-C1650	1650	1400	KTA50-G8	DSE7320	300.0	5500×2250×2500	10000	12192×2438×2896	17000
FKS-C1650	1650	1500	KTA50-GS8	DSE7320	309.0	5700×2250×2500	10500	12192×2438×2896	18000



# VOLVO

## DIESEL GENERATOR SET

# VOLVO PENTA



Genset Model	Genset Power		Engine Model	Controller	Fuel Consumption (L/H) 100%	Open Genset Dimension & Weight		Soundproof Genset Dimension & Weight	
	Standby (kVA) PF:0.8	Prime (kVA) PF:0.8				Dimension (L x W x H) mm	Weight (kg)	Dimension (L x W x H) mm	Weight (kg)
FKS-V94	94	85	TAD630GE	DSE6020	19.3	2080 x 940 x 1550	1290	3000 x 1200 x 1900	1850
FKS-V110	110	100	TAD631GE	DSE6020	22.8	2080 x 920 x 1550	1350	3000 x 1200 x 1900	1900
FKS-V142	142	130	TAD632GE	DSE6020	28.6	2080 x 920 x 1550	1400	3000 x 1200 x 1900	2000
FKS-V165	165	150	TAD731GE	DSE6020	32.9	2400 x 920 x 1550	1760	3000 x 1200 x 2000	2400
FKS-V206	206	188	TAD732GE	DSE7320	40.3	2600 x 1050 x 1770	1820	3800 x 1300 x 2200	2700
FKS-V220	220	200	TAD733GE	DSE7320	43.6	2600 x 1050 x 1770	1820	3800 x 1300 x 2200	2700
FKS-V275	275	250	TAD734GE	DSE7320	51.8	2650 x 1120 x 1670	2000	3800 x 1300 x 2200	2870
FKS-V350	346	315	TAD1341GE	DSE7320	60.6	2950 x 1120 x 1600	2350	4000 x 1500 x 2300	3920
FKS-V385	385	350	TAD1342GE	DSE7320	68.0	2950 x 1120 x 1600	2350	4000 x 1500 x 2300	3920
FKS-V412	412	375	TAD1343GE	DSE7320	73.6	3130 x 1120 x 1800	2900	4300 x 1500 x 2400	4300
FKS-V450	450	410	TAD1344GE	DSE7320	80.2	3130 x 1120 x 1800	3000	4300 x 1500 x 2400	4400
FKS-V500	506	462	TAD1345GE	DSE7320	88.5	3200 x 1120 x 1800	3200	4300 x 1500 x 2400	4405
FKS-V550	550	500	TAD1641GE	DSE7320	99.9	3300 x 1280 x 2000	3450	4700 x 1700 x 2500	5140
FKS-V660	660	600	TAD1642GE	DSE7320	119.7	3300 x 1280 x 2000	3610	4700 x 1700 x 2500	5590
FKS-V700	700	630	TWD1643GE	DSE7320	124.2	3400 x 1400 x 1950	4050	4800 x 1800 x 2600	6060



# DOOSAN

## DIESEL GENERATOR SET



Genset Model	Genset Power		Engine Model	Controller	Fuel Consumption (L/H) 100%	Open Genset Dimension & Weight		Soundproof Genset Dimension & Weight	
	Standby (kVA) PF:0.8	Prime (kVA) PF:0.8				Dimension (L×W×H) mm	Weight (kg)	Dimension (L×W×H) mm	Weight (kg)
FKS-D68	68	62	D658	DSE6020	13.0	2050×800×1000	820	2400×1000×1550	1350
FKS-D87	87	80	D1146	DSE6020	16.0	2370×790×1200	1050	2700×1100×1650	1500
FKS-D125	125	115	D1146T	DSE6020	21.0	2370×790×1200	1160	3300×1200×1800	2100
FKS-D165	165	150	P086TA	DSE6020	28.0	2600×1000×1500	1750	3300×1200×1800	2200
FKS-D181	181	165	P086Ti-1	DSE6020	33.0	2600×1000×1500	1750	3300×1200×1800	2500
FKS-D225	225	200	P087Ti	DSE6020	43.1	2680×950×1430	2200	3300×1200×1850	3000
FKS-D250	250	225	DP086LA	DSE6020	45.0	2680×950×1430	2200	3600×1300×2100	3300
FKS-D300	300	275	P126Ti	DSE7320	58.1	2910×1050×1530	2450	3600×1300×2100	3600
FKS-D325	325	300	P126Ti-11	DSE7320	63.1	2910×1050×1530	2450	4000×1400×2100	3800
FKS-D400	400	360	P158LE-1	DSE7320	78.7	3120×1390×1830	2930	4300×1500×2200	4400
FKS-D462	462	400	P158LE	DSE7320	89.3	3120×1390×1830	2950	4300×1500×2200	4800
FKS-D500	500	452	DP158L.CF	DSE7320	98.0	3120×1390×1830	3150	4300×1500×2200	5200
FKS-D575	575	525	DP158L.DF	DSE7320	115.0	3295×1390×1830	3500	4800×1800×2500	5500
FKS-D625	625	570	DP180LAF	DSE7320	134.0	3295×1390×1830	4000	4800×1800×2500	6000
FKS-D687	687	625	DP180LBF	DSE7320	150.0	3450×1390×1840	4500	4800×1800×2500	6500
FKS-D750	750	687	DP222L.BF	DSE7320	160.0	3450×1390×1840	5000	5000×2000×2600	7000
FKS-D825	825	750	DP222L.CF	DSE7320	170.0	3450×1390×1850	5500	5000×2000×2600	7500

# MTU



## DIESEL GENERATOR SET



Genset Model	Genset Power		Engine Model	Controller	Fuel Consumption (L/H) 100%	Open Genset Dimension & Weight		Soundproof Genset Dimension & Weight	
	Standby (kVA) PF:0.8	Prime (kVA) PF:0.8				Dimension (L x W x H) mm	Weight (kg)	Dimension (L x W x H) mm	Weight (kg)
FKS-M300	300	275	6R1600G10F	DSE7320	62.0	2900 x 1150 x 1650	2620	4000 x 1400 x 2100	3500
FKS-M343	343	312	6R1600G20F	DSE7320	72.0	2900 x 1150 x 1650	2620	4000 x 1400 x 2100	4300
FKS-M387	387	350	8V1600G10F	DSE7320	75.0	3040 x 1350 x 1760	3580	4200 x 1600 x 2200	4600
FKS-M450	450	400	8V1600G20F	DSE7320	85.0	3040 x 1350 x 1760	3580	4200 x 1600 x 2200	4800
FKS-M500	500	450	10V1600G10F	DSE7320	100.0	3320 x 1350 x 1850	4000	4500 x 1600 x 2300	5000
FKS-M550	550	500	10V1600G20F	DSE7320	110.0	3320 x 1350 x 1850	4200	4500 x 1600 x 2300	5500
FKS-M650	650	600	12V1600G10F	DSE7320	120.0	3500 x 1350 x 1850	4350	4500 x 1600 x 2300	6000
FKS-M712	712	650	12V1600G20F	DSE7320	125.0	3500 x 1350 x 1850	4350	4500 x 1600 x 2300	6500
FKS-M712	712	650	12V2000G25	DSE7320	125.0	3830 x 1580 x 2100	4955	5500 x 1900 x 2500	6800
FKS-M875	875	800	12V2000G65	DSE7320	161.9	4200 x 1650 x 2280	7000	6058 x 2438 x 2896	11000
FKS-M1000	1000	910	16V2000G25	DSE7320	188.8	4500 x 2000 x 2300	6190	6058 x 2438 x 2896	12000
FKS-M1100	1100	1000	16V2000G65	DSE7320	206.2	4500 x 2000 x 2300	7850	6058 x 2438 x 2896	12000
FKS-M1250	1250	1125	18V2000G65	DSE7320	237.4	4750 x 2000 x 2380	9000	6058 x 2438 x 2896	13000
FKS-M1375	1375	1250	18V2000G20F	DSE7320	240.0	6150 x 2150 x 2400	10000	12191 x 2438 x 2896	18000
FKS-M1500	1500	1375	12V4000G23R	DSE7320	277.6	6150 x 2150 x 2400	12000	12191 x 2438 x 2897	20000
FKS-M1650	1650	1500	12V4000G23	DSE7320	295.9	6150 x 2150 x 2400	13000	12191 x 2438 x 2896	21000
FKS-M2062	2062	1875	12V4000G63	DSE7320	357.3	6150 x 2150 x 2400	14000	12191 x 2438 x 2896	22500
FKS-M2350	2350	2150	16V4000G23	DSE7320	396.7	6500 x 2500 x 2500	17000	12191 x 2438 x 2896	23000
FKS-M2475	2475	2250	16V4000G63	DSE7320	436.6	6550 x 2600 x 2500	17600	12191 x 2438 x 2896	23600
FKS-M2750	2750	2500	20V4000G23	DSE7320	495.0	8300 x 2950 x 2550	20500	12191 x 2438 x 2896	26000
FKS-M3125	3125	2750	20V4000G63	DSE7320	535.8	8300 x 2950 x 2550	21000	12191 x 2438 x 2896	26500
FKS-M3437	3437	3125	20V4000G63L	DSE7320	575.8	8300 x 2950 x 2550	21000	12191 x 2438 x 2896	26500



# PERKINS



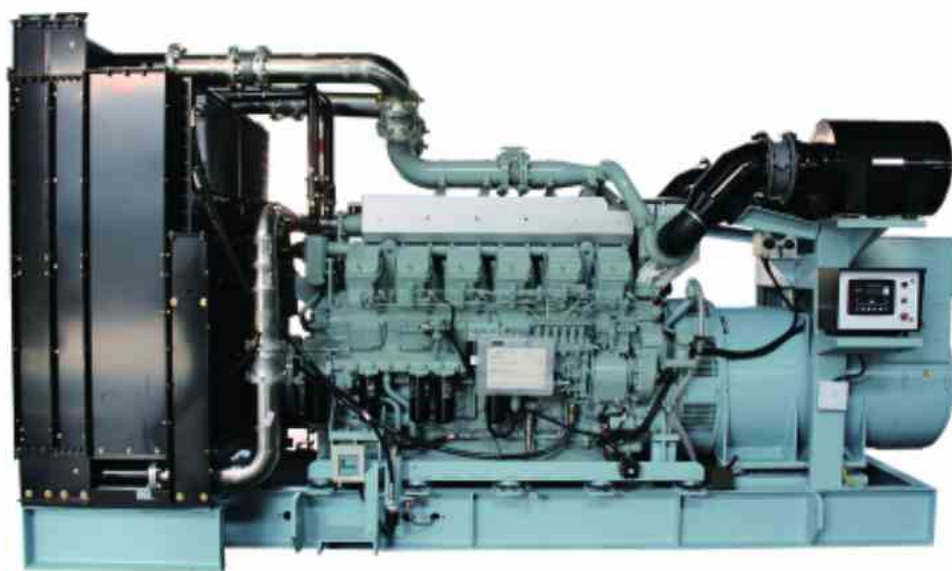
## DIESEL GENERATOR SET



Genset Model	Genset Power		Engine Model	Controller	Fuel Consumption (L/H) 100%	Open Genset Dimension & Weight		Soundproof Genset Dimension & Weight	
	Standby (kVA) PF:0.8	Prime (kVA) PF:0.8				Dimension (L x W x H) mm	Weight (kg)	Dimension (L x W x H) mm	Weight (kg)
FKS-P10	10	9	403D-11G	DSE6020	1.7	1260 x 630 x 730	450	2000 x 1000 x 1450	600
FKS-P13	13	12	403D-15G	DSE6020	2.5	1260 x 630 x 730	450	2000 x 1000 x 1450	650
FKS-P22	22	20	404D-22G	DSE6020	3.9	1260 x 630 x 730	470	2000 x 1000 x 1450	700
FKS-P32	32	30	1103A-33G	DSE6020	6.9	1470 x 690 x 1320	750	2000 x 1000 x 1450	1000
FKS-P50	50	45	1103A-33TG1	DSE6020	10.7	1760 x 760 x 1380	900	2500 x 1100 x 1700	1250
FKS-P66	66	60	1103A-33TG2	DSE6020	12.0	1800 x 650 x 1090	720	2500 x 1100 x 1700	1550
FKS-P71	71	65	1104A-44TG1	DSE6020	18.6	1760 x 760 x 1380	1100	2500 x 1100 x 1700	1550
FKS-P87	87	75	1104A-44TG2	DSE6020	18.7	2000 x 900 x 1550	1200	3000 x 1200 x 1850	1750
FKS-P110	110	100	1104C-44TAG2	DSE6020	22.6	2150 x 900 x 1550	1300	3000 x 1200 x 1850	1800
FKS-P165	165	150	1105A-70TAG2	DSE6020	33.4	2410 x 930 x 1660	1600	3250 x 1170 x 1800	2350
FKS-P202	202	180	1105A-70TAG3	DSE6020	41.6	2550 x 930 x 1670	1800	3600 x 1300 x 2100	2450
FKS-P220	220	200	1306A-E87TAG3	DSE6020	43.0	2500 x 915 x 1630	1730	3600 x 1300 x 2100	2500
FKS-P250	250	227	1306C-E87TAG4	DSE6020	44.0	2500 x 915 x 1630	1840	3600 x 1300 x 2100	2600
FKS-P275	275	250	1306C-E87TAG6	DSE7320	45.0	2580 x 930 x 1670	2000	3580 x 1250 x 2060	2800
FKS-P325	325	300	1606A-E93TAG5	DSE7320	60.0	2500 x 915 x 1630	1840	4230 x 1460 x 2150	4200
FKS-P387	387	350	2206C-E13TAG2	DSE7320	75.0	3100 x 1120 x 1790	3000	4230 x 1460 x 2150	4350
FKS-P450	450	400	2206C-E13TAG3	DSE7320	85.0	3100 x 1120 x 1790	3200	4230 x 1460 x 2150	4550
FKS-P500	500	450	2506C-E15TAG1	DSE7320	99.0	3400 x 1270 x 1970	4000	4630 x 1660 x 2250	5600
FKS-P550	550	500	2506C-E15TAG2	DSE7320	106.0	3400 x 1270 x 1970	4200	4630 x 1660 x 2250	5700
FKS-P650	650	600	2806C-E18TAG1A	DSE7320	129.0	3600 x 1400 x 2100	4500	5030 x 1660 x 2550	6500
FKS-P712	712	650	2806A-E18TAG2	DSE7320	132.0	3600 x 1400 x 2100	4600	5030 x 1660 x 2550	6600
FKS-P825	825	750	4006-23TAG2A	DSE7320	168.9	3950 x 1700 x 2200	5490	5800 x 1800 x 2550	7530
FKS-P875	875	800	4006-23TAG3A	DSE7320	170.7	3950 x 1700 x 2200	5500	5800 x 1800 x 2550	7550
FKS-P1000	1000	910	4008TAG1A	DSE7320	195.0	4650 x 2060 x 2300	7450	6058 x 2438 x 2896	12650
FKS-P1100	1100	1000	4008TAG2A	DSE7320	205.9	4650 x 2060 x 2300	7600	6058 x 2438 x 2896	12500
FKS-P1375	1375	1250	4012-46TWG2A	DSE7320	261.6	4700 x 1780 x 2500	9500	6058 x 2438 x 2896	14500
FKS-P1650	1650	1500	4012-46TAG2A	DSE7320	290.0	5300 x 2192 x 2435	10500	12191 x 2438 x 2896	18000
FKS-P1875	1875	1650	4012-46TAG3A	DSE7320	320.0	5300 x 2192 x 2435	11203	12191 x 2438 x 2896	18500
FKS-P2000	2000	1850	4016TAG1A	DSE7320	371.1	5710 x 2780 x 3350	13300	12191 x 2438 x 2896	20500
FKS-P2200	2200	2000	4016TAG2A	DSE7320	390.0	6010 x 2700 x 3010	12840	12191 x 2438 x 2896	20500
FKS-P2500	2500	2250	4016-61TRG3	DSE7320	454.4	6000 x 2700 x 3400	14000	12191 x 2438 x 2896	21000

# MITSUBISHI

DIESEL GENERATOR SET



Genset Model	Genset Power		Engine Model	Controller	Fuel Consumption (L/H) 100%	Open Genset Dimension & Weight		Soundproof Genset Dimension & Weight	
	Standby (kVA) PF:0.8	Prime (kVA) PF:0.8				Dimension (L x W x H) mm	Weight (kg)	Dimension (L x W x H) mm	Weight (kg)
FKS-SL750	750	675	S6R2-PTA	DSE7320	124.0	3560 x 1420 x 2050	4885	4800 x 1800 x 2500	7000
FKS-SL825	825	750	S6R2-PTAA	DSE7320	156.7	3950 x 1600 x 2000	5750	6058 x 2438 x 2896	10000
FKS-SL880	880	800	S612A2-PTA	DSE7320	160.0	3950 x 1600 x 1950	6100	6058 x 2438 x 2896	13500
FKS-SL1168	1168	1062	S12H-PTA	DSE7320	216.1	4600 x 1750 x 2500	7800	6058 x 2438 x 2896	14000
FKS-SL1375	1375	1250	S12R-PTA	DSE7320	260.6	4570 x 2100 x 2460	9100	6058 x 2438 x 2896	15000
FKS-SL1500	1500	1375	S12R-PTA2	DSE7320	272.0	4650 x 2100 x 2630	9600	6058 x 2438 x 2896	16500
FKS-SL1650	1650	1500	S12R-PTAA2	DSE7320	308.0	5000 x 2200 x 3000	10000	6058 x 2438 x 2896	18000
FKS-SL1925	1925	1750	S16R-PTA	DSE7320	347.6	5500 x 1850 x 2760	11100	12192 x 2438 x 2896	20000
FKS-SL2062	2062	1875	S16R-PTA2	DSE7320	398.7	5450 x 2600 x 3100	12000	12192 x 2438 x 2896	21500
FKS-SL2250	2250	2000	S16R-PTAA2	DSE7320	403.8	5850 x 2450 x 3430	14400	12192 x 2438 x 2896	22000
FKS-SL2500	2500	2250	S16R2-PTAW	DSE7320	478.0	6200 x 2830 x 3500	15000	12192 x 2438 x 2896	24500



# YUCHAI



## DIESEL GENERATOR SET



Genset Model	Genset Power		Engine Model	Controller	Fuel Consumption (L/H) 100%	Open Genset Dimension & Weight		Soundproof Genset Dimension & Weight	
	Standby (kVA) PF:0.8	Prime (kVA) PF:0.8				Dimension (L×W×H) mm	Weight (kg)	Dimension (L×W×H) mm	Weight (kg)
FKS-Y19	19	15	YC2108D	DSE6020	8.6	1400×630×850	450	2000×1000×1450	600
FKS-Y25	25	22	YC2115D	DSE6020	4.6	1400×630×850	480	2000×1000×1450	1050
FKS-Y27	27	25	YC4FA40Z-D20	DSE6020	5.0	1600×630×1000	680	2000×1000×1450	850
FKS-Y37	37	35	YC2115ZD	DSE6020	7.0	1760×760×1250	750	2300×1000×1550	1000
FKS-Y41	41	37	YC4FA55Z-D20	DSE6020	8.0	1800×780×1250	800	2400×1000×1550	1350
FKS-Y44	44	40	YC4D60-D21	DSE6020	8.5	1800×780×1250	820	2400×1000×1550	1400
FKS-Y56	56	50	YC4FA75L-D20	DSE6020	11.6	1900×780×1250	840	2400×1000×1550	1450
FKS-Y62	62	56	YC4D85Z-D20	DSE6020	12.0	1900×780×1250	850	2700×1100×1650	1480
FKS-Y69	69	62	YC4D90Z-D20	DSE6020	13.0	1950×800×1250	880	2700×1100×1650	1500
FKS-Y80	80	75	YC4A100Z-D20	DSE6020	18.0	2200×1800×1300	900	2700×1100×1650	1600
FKS-Y110	110	100	YC6B135Z-D20	DSE6020	23.2	2350×850×1350	1200	3000×1200×1650	1850
FKS-Y125	125	112	YC6B155L-D21	DSE6020	26.0	2400×850×1500	1300	3000×1200×1650	1900
FKS-Y137	137	125	YC6B180L-D20	DSE6020	28.0	2400×850×1500	1300	3000×1200×1650	2050
FKS-Y165	165	150	YC6B205L-D20	DSE6020	32.0	2400×850×1500	1400	3000×1200×1650	2200
FKS-Y187	187	175	YC6A230L-D20	DSE6020	41.0	2500×900×1650	1600	3300×1200×1850	2500
FKS-Y200	200	187	YC6A245L-D21	DSE6020	43.0	2550×950×1650	1650	3300×1200×1850	2600
FKS-Y250	250	225	YC6MK285L-D20	DSE6020	50.0	3000×1200×1650	2000	4000×1400×2100	3000
FKS-Y275	275	250	YC6MK350L-D20	DSE7320	58.0	3000×1200×1650	2200	4000×1400×2100	3400
FKS-Y350	350	312	YC6MK420L-D20	DSE7320	72.0	3000×1200×1650	2300	4000×1400×2100	3800
FKS-Y375	375	350	YC6MU480L-D20	DSE7320	75.0	3000×1200×1650	2400	4000×1400×2100	4200
FKS-Y412	412	375	YC6K500-D30	DSE7320	76.0	3200×1300×1700	2500	4300×1500×2200	4600
FKS-Y437	437	400	YC6K520-D30	DSE7320	81.0	3200×1300×1700	2500	4300×1500×2200	4700
FKS-Y475	475	437	YC6K570-D30	DSE7320	88.0	3200×1300×1700	2500	4300×1500×2200	4800
FKS-Y500	500	450	YC6T600L-D22	DSE7320	90.0	3200×1300×1700	2600	4300×1500×2200	5000
FKS-Y550	550	500	YC6T660L-D20	DSE7320	110.0	3300×1300×1700	4300	4600×1600×2300	5500
FKS-Y575	575	525	YC6T700L-D20	DSE7320	115.0	3300×1300×1700	4400	4600×1600×2300	5500
FKS-Y625	625	562	YC6T780L-D20	DSE7320	120.0	3400×1300×1700	4500	4600×1600×2300	6000
FKS-Y687	687	625	YC6TD840L-D20	DSE7320	128.0	3650×1500×2050	4850	4800×1800×2500	6600
FKS-Y750	750	687	YC6TD900-D31	DSE7320	152.0	3700×1450×2350	7000	4800×1800×2500	7000
FKS-Y825	825	750	YC6C1020-D31	DSE7320	155.0	3700×1450×2350	7650	6058×2438×2896	11500
FKS-Y875	875	800	YC6C1070-D31	DSE7320	165.0	3800×1450×2350	7800	6058×2438×2896	12000
FKS-Y1000	1000	900	YC6C1220-D31	DSE7320	183.0	3950×1450×2350	8300	6058×2438×2896	12500
FKS-Y1100	1100	1000	YC6C1320-D31	DSE7320	206.0	4100×1450×2350	8600	6058×2438×2896	13000
FKS-Y1250	1250	1125	YC6C1520-D31	DSE7320	218.0	4500×1644×2550	9000	6058×2438×2896	14000
FKS-Y1375	1375	1250	YC12VC1680-D31	DSE7320	280.0	5300×1800×2550	9300	12192×2438×2896	16000
FKS-Y1650	1650	1500	YC12VC2070-D31	DSE7320	324.0	5300×1800×2551	10000	12192×2438×2896	17000
FKS-Y1875	1875	1687	YC12VC2270-D31	DSE7320	404.0	5300×1800×2552	10800	12192×2438×2896	18000
FKS-Y2062	2062	1875	YC12VC2510-D31	DSE7320	405.0	5350×1800×2553	11000	12192×2438×2896	18500
FKS-Y2250	2250	2125	YC12VC2700-D31	DSE7320	440.0	5400×1800×2554	12840	12192×2438×2896	20000

# SPECIAL MODELS





# ALTERNATOR



## ALTERNATOR

FKS

Stamford, Leroy Somer, Mecc alte, Marathon, Faraday alternator and other famous brand alternators can be used with each engine brand according to requirements

Brushless, single bearing system, flexible disc, 4 poles

Insulation class H

Standard degree of protection IP21 (\*IP22/IP23 is available)

Self-exciting and self-regulating

Impregnation with tropicalised epoxy varnish

Solid state Automatic Voltage Regulator

Stator winding with 2/3 pitch for improved harmonics

# CONTROL PANEL

## DSE 6020 features

FKS power

The module is used to monitor main supply and starts and stops of a standby generating set

Micro-processor based design

Automatic control of main and generator contactors

Monitors engine performance and AC power output

LED alarm indication

Front panel configuration of timers and alarm trip points

CAN and magnetic pick-up versions (specify on ordering)

4 digital inputs/3 analogue inputs

6 outputs (4 configurable on Magnetic PICK-up, 6 configurable on CAN bus version)

Easy push button control

Stop/reset-manual-auto-test-start



## DSE 7320 features

FKS power

The module is used to monitor a mains supply and starts and stops a standby generating set

Micro-processor based design

Automatic control of mains and generator contactors

Monitors engine performance and AC power output

LED alarm indication

Front panel configuration of timers and alarm trips points

Easy push button control

Stop/reset-manual - test-auto-mute alarm-start



# HONORABLE CERTIFICATE

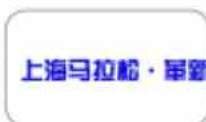




## VALUABLE PARTNERS



## COOPERATIVE SUPPLIERS





Fu Kang Si

TEL:0800

HTTP





# Warranty and Service

## Scope of Warranty

The warranty rule is applicable to all generating sets supplied by FKS Power. The warranty is only effective under the condition that the generator set is correctly installed, used and maintained, and the malfunction (the malfunction can be repaired by warranty service) is caused by defects of material or manufacture process. The warranty period is 12 months or accumulatively running one thousand hours, since the shipment date (include the transportation and installation time, or the long time period of being idle). Termination date of the special warranty period is determined by one of the above time limitations which expire first.

## Responsibility of FKS Power

FKS Power is responsible for the all replacement parts (customer need provide the proof of the malfunction parts) within warranty period. In order to analyze and find out the root cause of malfunction of generator set, for the severe malfunction such as breakdown of cylinder body, crank shaft and connecting bar, or winding of the alternator's rotor is loosen, mentioned parts could not be disassembled or repaired the product without FKS Power approval.

## Responsibility of customer

Customer shall be responsible for the cost of lubricating oil, anti-freeze, anti-rust, filter element, hose, strap, fuse and indicator lamp ball which is used to eliminate the malfunction and other costs of maintenance. Customer is responsible for providing the authentic record of maintenance and repairing during the period of operation.

In addition, we also provide pre-sales technical consulting, generator set operation training, and all other related service. FKS Power people always consider after-sales is our extremely important part of sales, so we provide excellent after-sales service and spare parts support for the generator sets within 24/7 availability with country wide and an extensive spare parts stock.



**COMPREHENSIVE  
TECHNICAL SUPPORT**

## Some overseas performance statements

序号	项目名称	承建单位
1	Turkey Kazan Combined Cycle Thermal Power Station Project	China Tianchen Engineering Corp.
2	Iran Arak Electrolytic Aluminum Project	CHINA NONFERROUS METAL INDUSTRY'S FOREIGN ENGINEERING AND CONSTRUCTION CO., LTD
3	Russian heavy oil power plant	Xinzhongjing (Beijing )Energy Technology Co., Ltd.
4	Mozambican Mazimgil Procurement Project	Sinohydro Bureau 9CO.,LTD
5	Coldwell Project in Liberia	Sinohydro Bureau 9CO.,LTD
6	Beilin Glass Fiber Pool Kiln Drawing Project	CBMI CONSTRUCTION CO.,LTD.
7	Ecuador Clinker Production Line Project	CBMI CONSTRUCTION CO.,LTD.
8	1 million tons /year cement construction project in Mongolia	China National Building Materials Group( Beijing Kaisheng )
9	Kazakhstan ShymKent 3200 t/ dclinker production line project	China National Building Materials Group(Xinjiang Kaisheng )
10	Kazakhstan Akzobin Project	China Petroleum Engineering &Construction Corporation
11	Algeria 3200 ton project	SINOMA INTERNATIONAL ENGINEERING CO.,LTD
12	Egypt Cement 6TPD Clinker Cement Production Line	SINOMA INTERNATIONAL ENGINEERING CO.,LTD
13	Production line of 300 MW copper indium gallium selenium thin film battery assembly	China Triumph International Engineering Co.,Ltd

	per year	
14	Nigeria EDO Line X6000 Tons Project	TIANJIN CEMENT INDUSTRY DESIGN & RESEARCH INSTITUTE CO.,LTD.
15	Kyrgyzstan cement production line	TIANJIN CEMENT INDUSTRY DESIGN & RESEARCH INSTITUTE CO.,LTD.
16	Cote d'Ivoire Aggregate Production Line Project	TIANJIN CEMENT INDUSTRY DESIGN & RESEARCH INSTITUTE CO.,LTD.
17	The Bolivia Project	Sinohydro Engineering Bureau 4CO.,LTD
18	Indonesia Badantoru Project	Sinohydro Bureau 10 CO.,LTD









